

TOTALINE Air Curtain

XQ-5(A)/XQ-5S(A)

Elegance Series

Automatic

XQ-5(A)

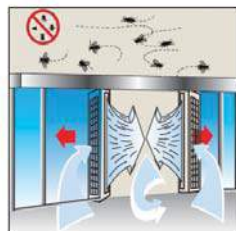
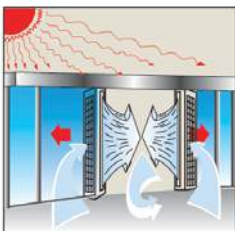
XQ-5S(A)



Features

- 12 -18 m/s air flow velocity
- Automatic operation with delay-off timer & wireless door sensor
- 90 up to 210 cm in length
- Centrifugal impellers
- Single phase electrical input
- Totally enclosed motor
- Direct drive
- Self-lubricating ball bearing
- 2 speeds selectable
- Anodized Aluminum construction
- Manual/Automatic modes
- Easy maintenance
- Horizontal mounting
- Long life time
- Quick and easy to install
- Environmental friendly
- High quality

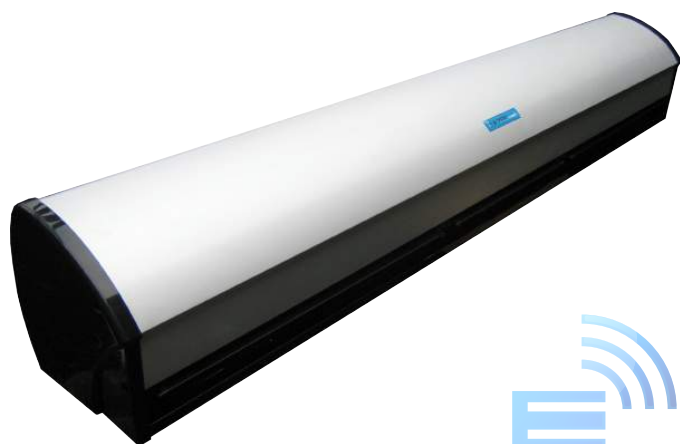
THE PERFECT BARRIER FOR BLOCKING HEAT, INSECTS, AND DUST



TOTALINE[®]

TOTALINE Air Curtain Elegance Series

**XQ-5(A)
XQ-5S(A)**



The XQ-5(A)/XQ-5S(A) series of air curtains are made from extruded anodized Aluminum Alloy. Strong, durable, and elegant.

The impellers are directly driven. The motors used are of totally enclosed type with self-lubricating ball bearings. XQ-5(A)/XQ-5S(A) can operate at 2 selectable speeds, 'LO' and 'HI'.

With appropriate controller, the XQ-5(A)/XQ-5S(A) can be configured to operate in manual as well as automatic modes whereby the air curtain units will operate only when the door is opened and stop automatically when the door closed.

Specification XQ 5(A)

AIR CURTAIN SPECIFICATION												
Model	Dimension (mm)			Airflow Speed		Airflow Volume		Voltage	Freq	Phase	Power	Weight
	Length	Width	Height	FPM	m/s	CFM	CMH	V	Hz	Φ	Watt	Kg
XQ-509(A)	900	220	220	2400	12	564	957	220-240	50	1	131	16
XQ-512(A)	1200					752	1276				146	18
XQ-515(A)	1500					939	1595				204	22
XQ-518(A)	1800					1127	1914				219	25
XQ-521(A)	2100					1315	2233				277	28

All data in the above table were measured at 'HI' setting without any filter panels installed.

(A) = Automatic (with delay-off timer and wireless door sensor)

Specification XQ-5S(A)

AIR CURTAIN SPECIFICATION												
Model	Dimension (mm)			Airflow Speed		Airflow Volume		Voltage	Freq	Phase	Power	Weight
	Length	Width	Height	FPM	m/s	CFM	CMH	V	Hz	Φ	Watt	Kg
XQ-509S(A)	900	220	220	3600	18	845	1434	220-240	50	1	383	16
XQ-512S(A)	1200					1126	1912				550	18
XQ-515S(A)	1500					1407	2390				633	22
XQ-518S(A)	1800					1680	2868				750	25
XQ-521S(A)	2100					1970	3364				883	28

All data in the above table were measured at 'HI' setting without any filter panels installed.

(A) = Automatic (with delay-off timer and wireless door sensor)

Your dealer:

TOTALINE®